

STANLEY

Assembly Technologies

QA ALPHA CONTROLLERS



Communication in Overdrive

α ALPHA

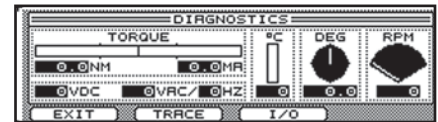
QPM

The New QA Alpha Controller

New Look – Inside and Out!

The QA Alpha has a sleek new look with its bold and bright interface, larger display and intuitive, graphic-based navigation features.

The new design is elegant as well as functional – making the QA easy to program and run. Improved navigation means that fewer keystrokes are required to set up parameters, assign I/O properties, or run trace data and diagnostics. The Parameter Wizard helps you to create, name and select numerous assembly strategies.



More Power Under the Hood

The new QA Alpha controller is more robust and powerful inside too. You can program and store up to 99 different parameter sets, and run trace analysis and diagnostics right on the controller. Make your assembly process more efficient using Operations Support – a feature that gives you the ability to create a chain of parameter sets. This enables the operator to perform multiple fastenings in one operation. And – when you use the Embedded Toolbox software with your computer and a web browser, you have an even more powerful user interface along with rich analysis and reporting capabilities.

Stay on the Fast Track

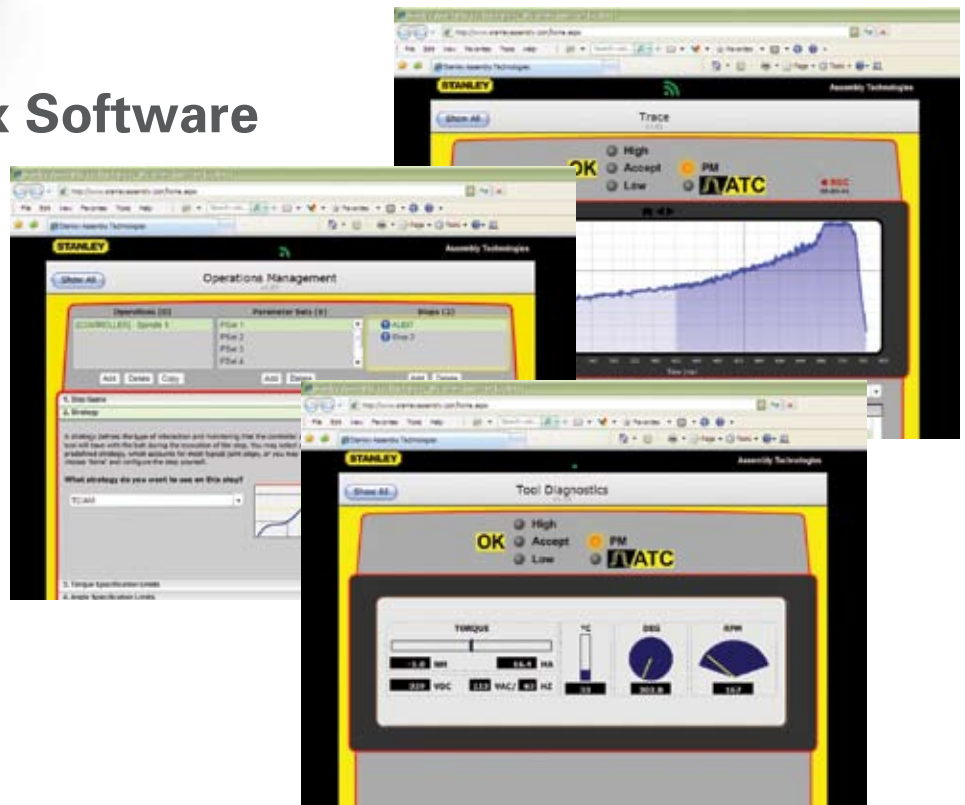
Feature upgrades are fast and easy to implement using the brand-new USB port and the optional Stanley USB Memory Stick. Using USB memory can provide backup/restore to your controller. One USB Memory Stick can hold backups for your entire plant, but the price is so economical - you may prefer to use a separate memory stick for each controller.

Embedded Toolbox Software

New and Improved QPM Software - All You Need is Your Web Browser!

The intuitive new Embedded Toolbox software has a graphical interface, making it more user friendly, and allowing you to view the display on your network computer's web browser. It's the only software you need for the QPM system and it's already installed right on your controller. To get started just point your browser at the controller's IP address.

The step-by-step configuration setup is logical and easy. Configuration of the tool, and single or multiple trace data can be viewed, saved or exported for later analysis.



QA Alpha - Ultimate Communication

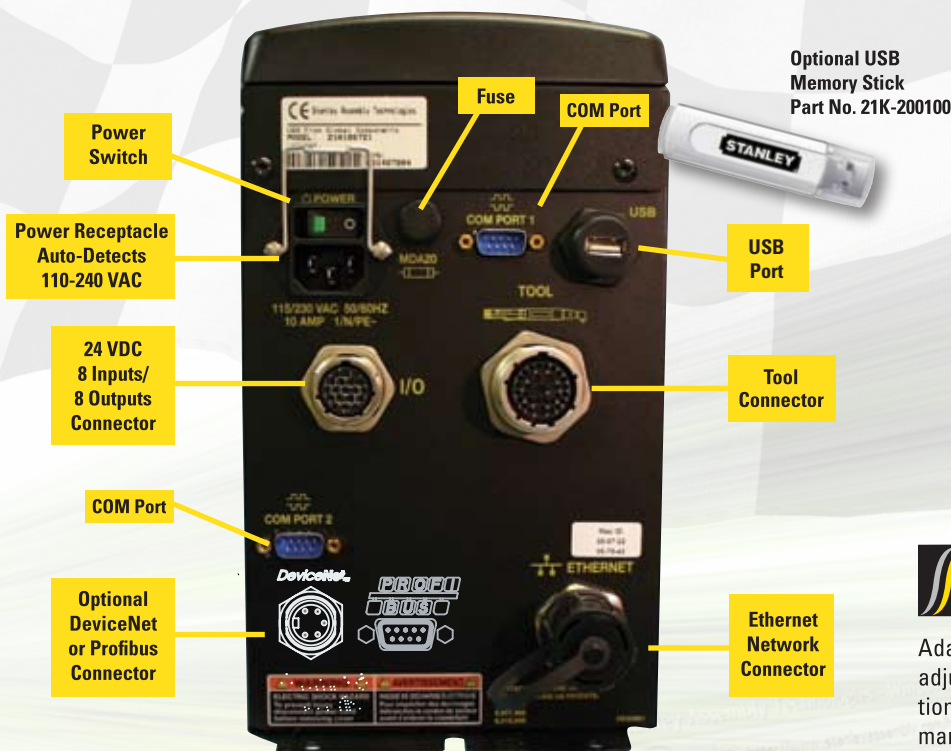
Input and Output – Better and Faster

Standard Ethernet – Every QA Alpha controller has an Ethernet port as a standard feature, allowing you to connect directly to your plant network. DeviceNet or Profibus connections are also available as an option.

24 VDC Input/Output – The 24 VDC Input/Output option enables error proofing, parameter selection from a socket tray or similar device, and remote control for fixtured tools.

USB Port – You'll also notice a USB port on the QA – an optional USB memory stick enables you to save the parameter sets created with the Parameter Wizard. Transfer parameter sets from one controller to the next, or provide backup and restore for your operation.

Two COM Ports – The QA Alpha includes two COM ports, one for connecting your computer enabling you to remotely configure the tool and controller – and one more allowing you to add a bar code reader, serial printer or serial network connection.

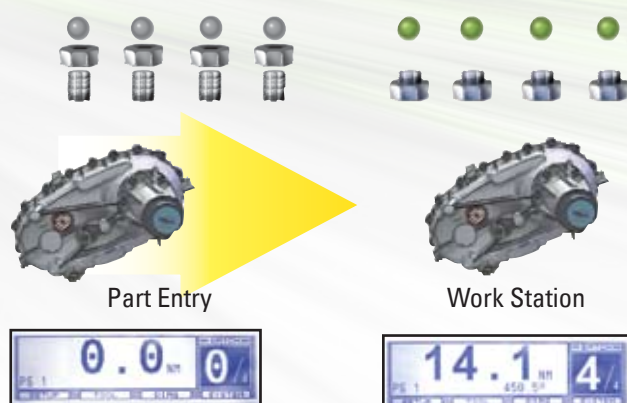


- Reduced times for setup, fastening, rework, and maintenance.
- Increased quality, productivity, ergonomics, and flexibility.



Adaptive Tightening Control (ATC)* automatically adjusts for different joint designs and part variations during each tightening cycle by dynamically managing speed and power to the motor.

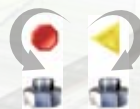
Optimized Error Proofing



QA Alpha compares actual torque results to quality limits, counts fastened bolts and detects cross-threads, re-hits, slip-offs. Parts exit the workstation only after all bolts are fastened correctly.



Bolts that do not meet specifications are identified for rework



QA Alpha Controller Installation Options

QA Alpha Models

Alpha Model Number	Ethernet	Device Net	Profibus	24 VDC I/O	Serial
QA1001-XDV	+	+		+	+
QA1001-XDX	+	+			+
QA1001-XPV	+		+	+	+
QA1001-XPX	+		+		+
QA1001-XXV	+			+	+
QA1001-XXX	+				+

The plinth used on all QA controllers provides convenient and protected cable routing plus quick release mounting for the controller.

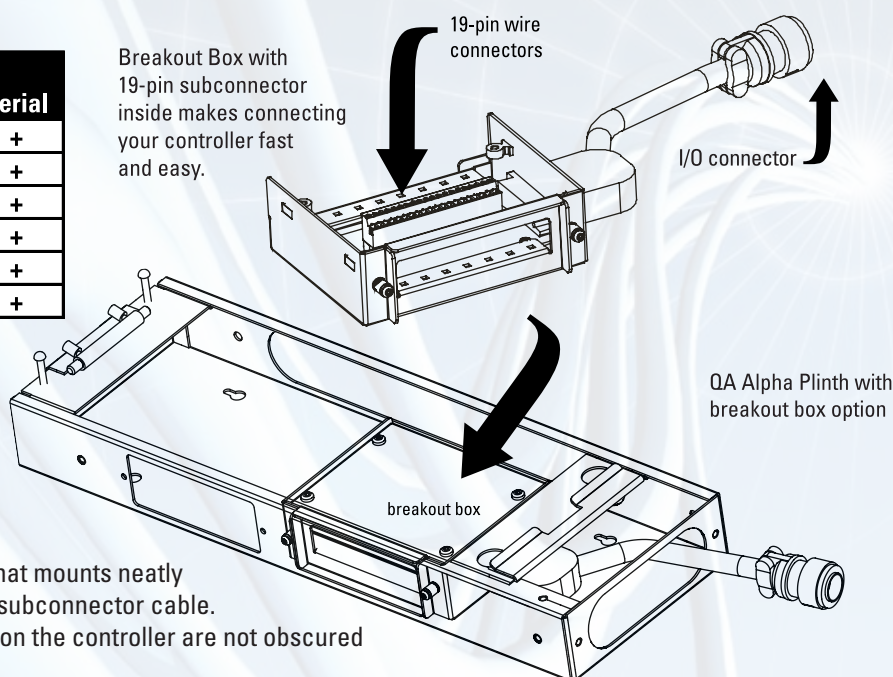
Breakout Box

The QA Alpha has an optional breakout box I/O module that mounts neatly inside the plinth with a controller connection and 19-pin subconnector cable. With the use of the breakout box, other I/O connections on the controller are not obscured by tangled, bulky cables.

The breakout box provides easy access for controller and tool connection. For new installs, the plinth and connections can be arranged and set up as needed – then the controllers just plug in and run. And – swapping out controllers is now fast and hassle-free.

QA Alpha 24V I/O Options

Part No.	19-pin 24V I/O Port	Included
21C104800	Mating Connector - Solder pins	Standard
21C104802	Mating Connector - Crimp pins	Optional
21C104804	Mating Connector - Crimp pins, crimp tool	Optional
21E102202	Breakout Box	Optional
21C202005	Extension Cable 5M	Optional
21C202010	Extension Cable 10M	Optional
21C202020	Extension Cable 20M	Optional



STANLEY

Stanley Assembly Technologies

www.StanleyAssembly.com

WORLD HEADQUARTERS
5335 Avion Park Drive
Cleveland, Ohio 44143-2328
USA Tel: +1 (440) 461-5500
Fax: +1 (440) 461-5592

STANLEY ASSEMBLY TECHNOLOGIES
Europe, China & India Headquarters
Outils Portatifs et Systemes d'Assemblage
Zone Immo-parc bat Loire 4, 78190 Trappes, France
Tel: +33 (1) 3050 9100
Fax: +33 (1) 3051 0708

STANLEY ASSEMBLY TECHNOLOGIES (GERMANY)
Frankfurter Straße 74
D-64521 Groß-Gerau, Germany
Tel: +49 (0) 6152 8052-0
Fax: +49 (0) 6152 8052-22

STANLEY ASSEMBLY TECHNOLOGIES (CHINA)
Room 1908, Shanghaimeart Tower
2299 Yan An Road West, Shanghai 200336, China
Tel: 011-86-21-3208-4550
Fax: 011-86-21-6236-0191

SALES AND SUPPORT AMERICAS/ASIA-PACIFIC
Applications and Productivity Center
1875 Research Drive Suite 200, Troy, MI 48063
USA Tel: 1 (248) 824-1100
Fax: +1 (248) 824-1110
Toll Free Service: (877) 787-7830
Toll Free Sales: (877) 709-8006

STANLEY ASSEMBLY TECHNOLOGIES (ITALY)
Divisione Assembly Technologies
47 Via Parco, 20046 Biassona (MI)
Tel: +39 (039) 2389.1
Fax: +39 (039) 2389970

STANLEY ASSEMBLY TECHNOLOGIES (UK)
Gowerton Road
Brackmills, Northampton NN4 7BW, England
Tel: +44 (1604) 827247
Fax: +44 (1604) 827277

STANLEY ASSEMBLY TECHNOLOGIES (JAPAN)
110 Sanmai-Cho
Kanagawa-Ku
Yokohama 221-0862, Japan
Tel: 81 45 413 3030
Fax: 81 45 413 3031

